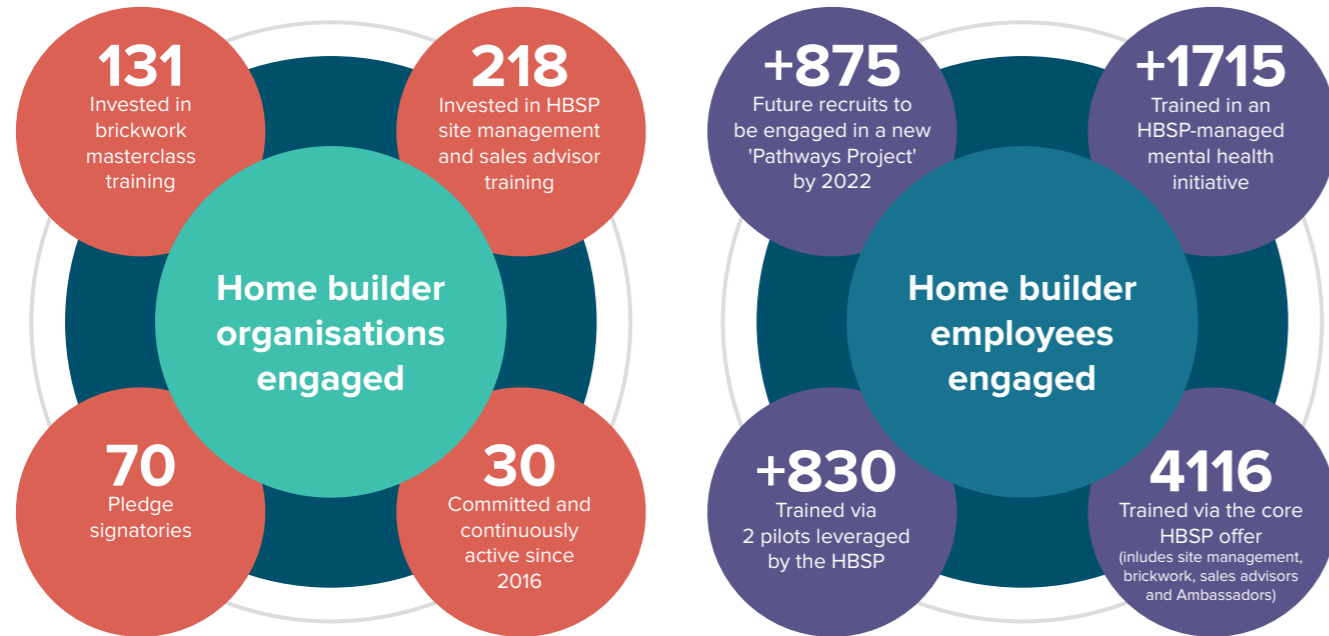
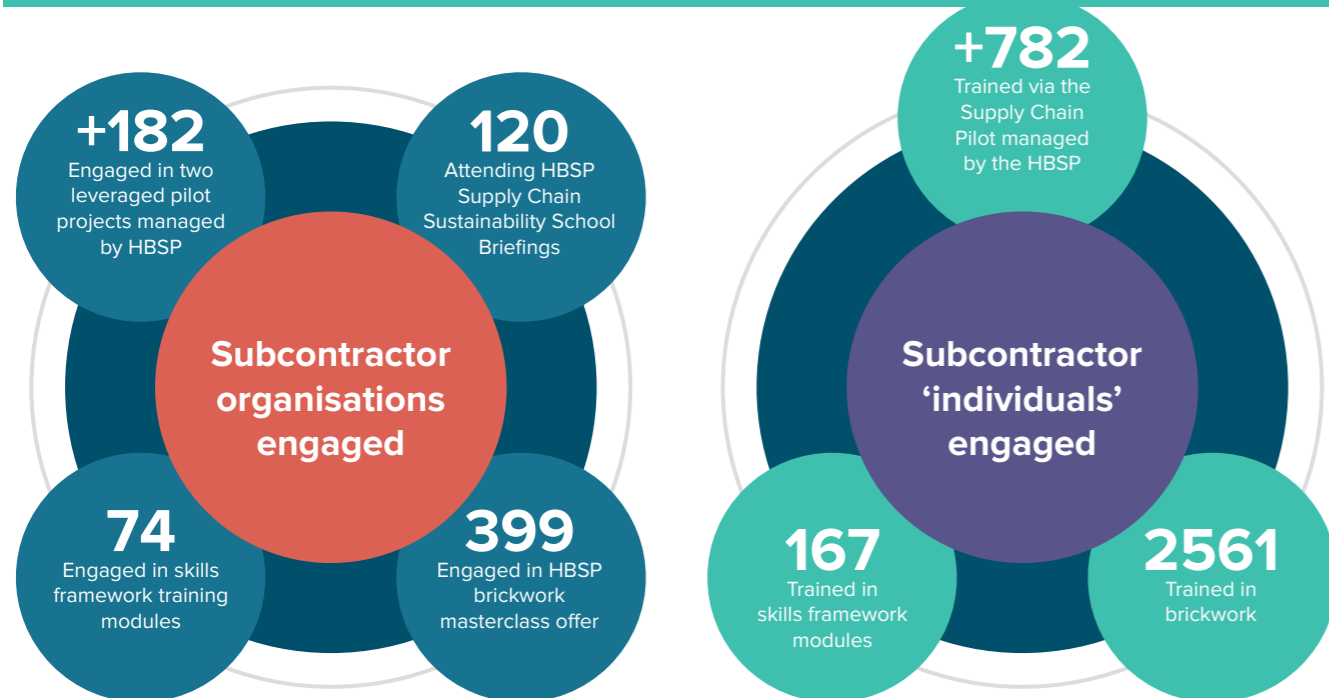


## Reach and engagement



## Proportion of Pledge signatories that took action and invested in training

66 out of 70 (94%)



## £ HBSP investment

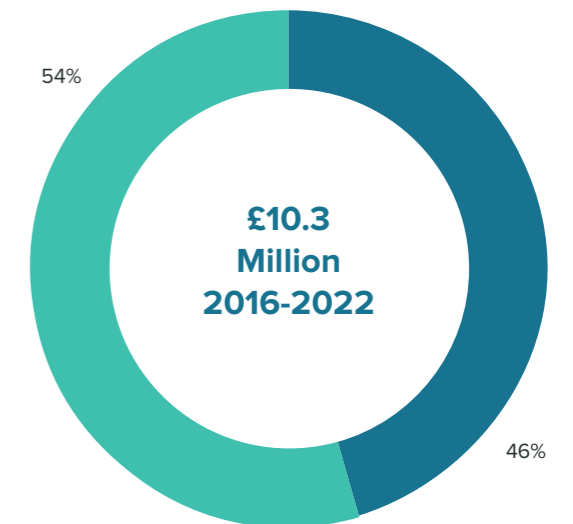


In total the Skills Partnership has engaged with 349 home builders and 473 supply chain companies across core and leveraged activity.

## Leverage

### Core and Leveraged HBSP Investment

- Core HBSP Joint Investment £4.7 million
- Leveraged HBSP Joint Investment £5.6 million



## Return on Investment

Sampled home builder case studies suggest a return on their investment in the core HBSP activity since 2016 within this estimated range.

